

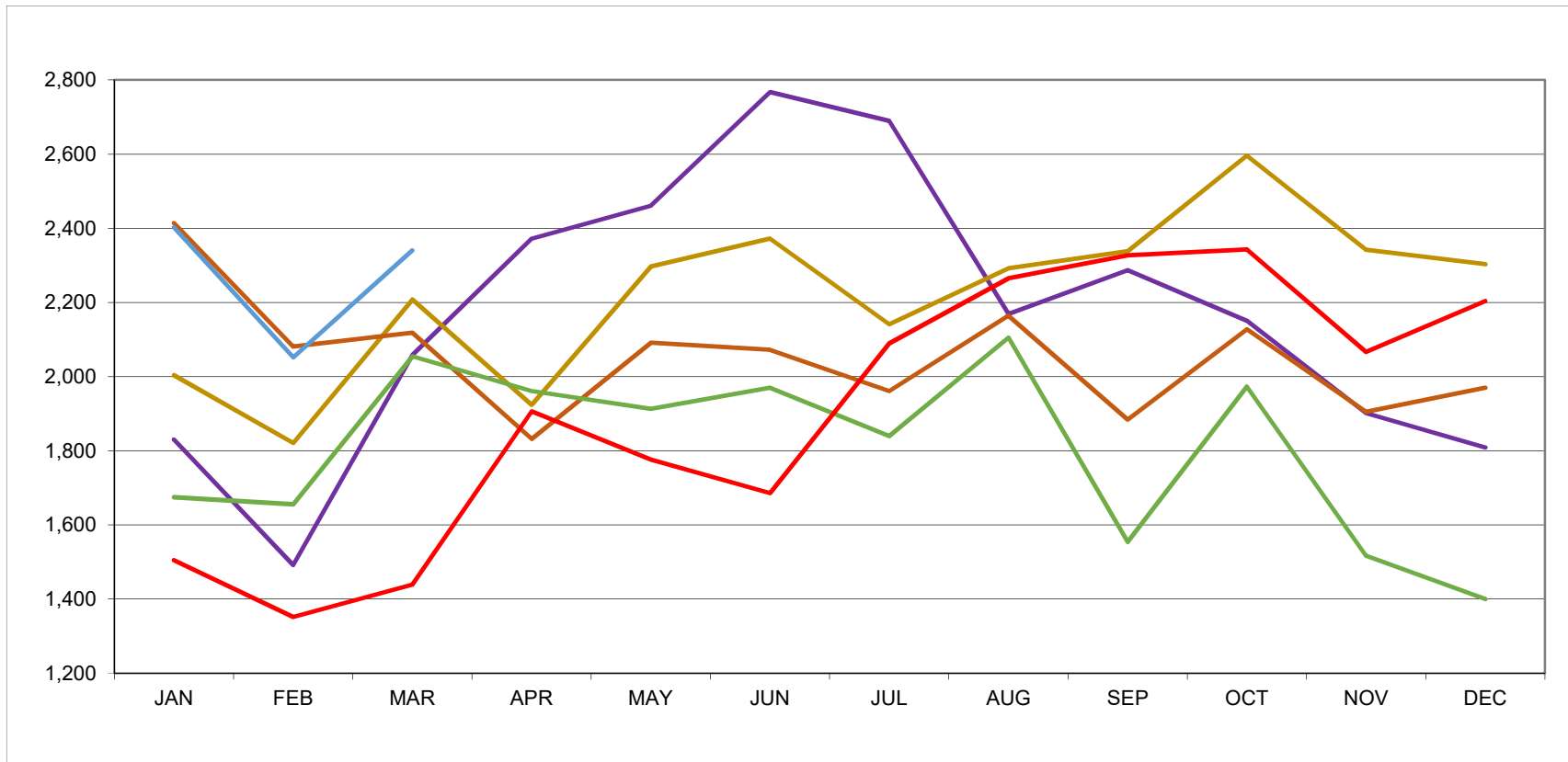
KERN COUNTY RECORDER

1530 Truxtun Ave., Bakersfield, CA 93301
(661) 868-6400



Jon Lifquist, Assessor-Recorder
Brian Pace, Assistant Recorder

RECONVEYANCES												Recorded (2015 to Present)	
	JAN	FEB	MAR	APR	MAY	JUN	JUL	AUG	SEP	OCT	NOV	DEC	TOTAL
2015	1,830	1,492	2,058	2,372	2,461	2,767	2,689	2,169	2,287	2,151	1,902	1,809	25,987
2016	2,004	1,821	2,208	1,924	2,297	2,372	2,141	2,292	2,338	2,596	2,342	2,303	26,638
2017	2,414	2,081	2,118	1,832	2,091	2,072	1,961	2,164	1,884	2,128	1,905	1,970	24,620
2018	1,675	1,656	2,055	1,961	1,913	1,970	1,840	2,105	1,554	1,973	1,517	1,400	21,619
2019	1,505	1,352	1,439	1,906	1,776	1,686	2,090	2,265	2,327	2,343	2,067	2,204	22,960
2020	2,402	2,052	2,340										



For additional recording statistics, please visit our website, at: http://assessor.co.kern.ca.us/recording_stats.php