

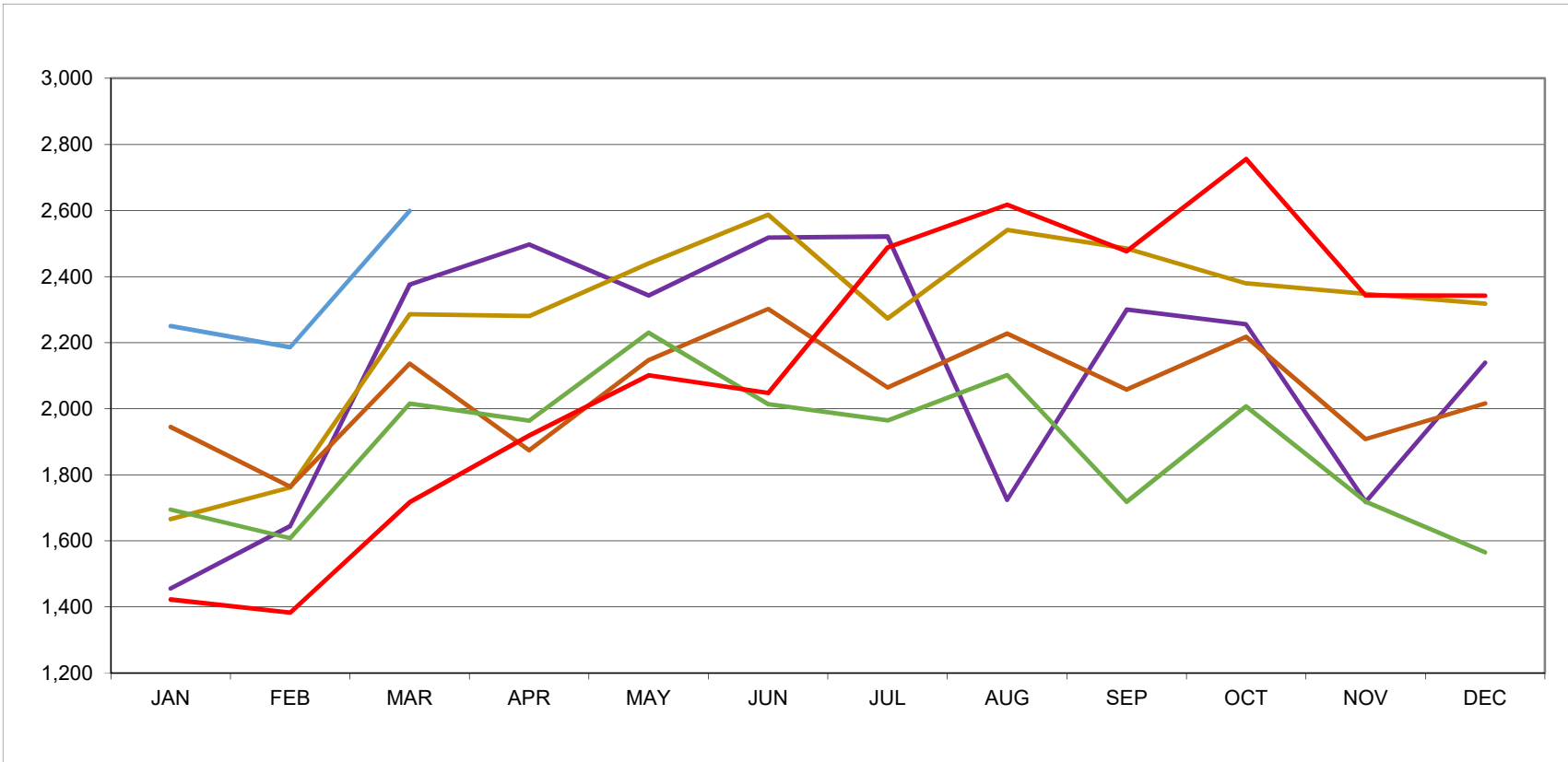
KERN COUNTY RECORDER

1530 Truxtun Ave., Bakersfield, CA 93301
(661) 868-6400



Jon Lifquist, Assessor-Recorder
Brian Pace, Assistant Recorder

DEEDS OF TRUST													Recorded (2015 to Present)
	JAN	FEB	MAR	APR	MAY	JUN	JUL	AUG	SEP	OCT	NOV	DEC	TOTAL
2015	1,456	1,645	2,376	2,497	2,343	2,518	2,521	1,724	2,300	2,255	1,718	2,139	25,492
2016	1,666	1,762	2,286	2,280	2,440	2,587	2,273	2,541	2,485	2,379	2,347	2,318	27,364
2017	1,945	1,764	2,137	1,874	2,147	2,302	2,064	2,228	2,058	2,218	1,908	2,016	24,661
2018	1,695	1,608	2,015	1,963	2,230	2,013	1,964	2,102	1,718	2,007	1,719	1,565	22,599
2019	1,423	1,383	1,717	1,919	2,101	2,047	2,488	2,618	2,477	2,756	2,343	2,342	25,614
2020	2,250	2,186	2,599										



For additional recording statistics, please visit our website, at: http://assessor.co.kern.ca.us/recording_stats.php